

2017

FPS Automation

ANNAVITRAN 2.1

All India Transactions Portal for Centre


Dated: 12thSeptember2017




Document Control Record

Version	Description of Change	Author	Date
0.1	Initial Draft	NIC	2 nd March 2017
2.0	Architecture , Scale and Web-services for state wise transactional data collection for all states	NIC	11 th July 2017
2.0	Added few parameters in existing web-services to populate report templates given by CPMU (All in red). Changes listed in table below.	NIC	22 th August 2017
2.1	Added one web service so as to provide acknowledgement of all the web services.	NIC	12 th September 2017

12th September 2017 Changes – Version 2.1:

Webservice 	Parameters added for Reports requested by <u>department</u>	Parameters added for resolving discrepancy/confusions in data sent by <u>states</u>	Parameters removed for resolving discrepancy/confusions in data sent by <u>states</u>
<p>pDSReceiveErrorReportHeader</p> <p>+</p> <p>pDSReceiveErrorReport</p>		Added to return acknowledgement on all web services..Corrections in authentication mode of stored otp and unauthenticated modes.	

22th August 2017 Changes – Version 2.0:

 Webservice	Parameters added for Reports requested by <u>department</u>	Parameters added for resolving discrepancy/confusions in data sent by <u>states</u>	Parameters removed for resolving discrepancy/confusions in data sent by <u>states</u>
Common header for all web services		Data preparation timestamp when data is prepared by state (data_ts)	
PDSReceiveStateWiseMonthlyStats	1.) Total coarse grains allocated (cg_tot). Report 5: Foodgrains allocation vs distribution through ePoS-All India 2.) Total no of cashless fps (fps_with_cashless_facility_count) Report 4 : PoS transaction Status-All India		
PDSReceiveDistrictWiseMonthlyStats	1.) Total coarse grains allocated (cg_tot). Report 5: Foodgrains allocation vs distribution through ePoS-All India		
PDSReceiveDistrictWiseDailyCommodityStats	1.) Code For coarse grains - 99 Report 5: Foodgrains allocation vs distribution through ePoS-All India		Measurement unit removed. Default set to Kg
PDSReceiveAuthDailyTransactionStats	1.) Authentication Mode for a state (per transaction). Refer Authentication Mode codes from Annexure A(Masters M2) Report 3 : Aadhaar based, failure and offline transaction report - India 2.) Total distinct Ration cards which performed transactions this month (total_rc_with_txn) Report 6: Month wise transaction percentage -All India. (To calculate transaction percentage)	Authentication Mode for a state (per transaction). Refer Authentication Mode codes from Annexure A(Masters M2)	

	<p>3.) Total distinct FPS which performed transactions this month (operational_epos_count) - Report 1: Details of ePoS Transaction for Additional margin Report 2: Aadhaar - Non-Aadhaar based authentication foodgrains distribution through ePoS-All India Report 4: PoS transaction Status- All India Report 5: Foodgrains allocation vs distribution through ePoS-All India Report 6: Month wise transaction percentage -All India. To calculate transaction percentage</p> <p>4.)Total SMS sent to beneficiaries this month(sms_sent) Report 4 : PoS transaction Status- All India</p> <p>5.) Not required anymore because of authentication modes 1.) Total Authenticated Transaction Count (total_auth) 2.)Total non-authenticated Transaction Count(total_no_auth) 3.) Total non-authenticated Transaction Count for today(total_no_auth_today) 4.) Name changed Total non-Transaction Count for today(total_auth_today to total_today)</p>		
PDSReceiveAuthDailyCommodityStatistics	<p>1.)Authentication Mode for a state (per transaction). Refer Authentication Mode codes from Annexure A (Masters M2). Report 3 : Aadhaar based, failure and offline transaction report - India</p>	Authentication Mode for a state (per transaction). Refer Authentication Mode codes from Annexure A (Masters M2)	
	<p>2.)Code For coarse grains - 99 Report 5 : Foodgrains allocation vs distribution through ePoS-All India</p>		

	3.)Not required anymore because of authentication modes Total Authenticated Distributed Quantity (total_auth_qty) Total Un Authenticated Distributed Quantity (total_no_auth_qty) Total Authenticated Distributed Quantity for today(total_auth_qty_today) Total Un Authenticated Distributed Quantity for today(total_no_auth_qty_today)	Measurement unit removed. Default set to Kg
--	--	---

Table of Contents

1.	Objective of the document	7
2.	Process Flow	8
2.1	Data Preparation and Data Staging.....	9
2.1.1	STATES - PREPARE STATE MONTHLY DATA: The States/UTs prepare the monthly cumulative counts (ration cards, beneficiaries, FPS counts used) in a pre-defined format state wise and district wise as per 3.1.2.	9
2.1.2	STATES - PULL STATE MONTHLY DATA: NIC annavitrans server receives data from states by hitting the state URL of the web-service on monthly basis.	9
2.1.3	STATES - PULL STATE DAILY DATA: NIC annavitrans server receives transactional data from states by hitting the state URL of the web-service on daily/hourly/scheduled basis.....	9
	<i>Webservice</i> : PDSReceiveDistrictwiseDailyCommodityStats	9
	<i>Webservice</i> : PDSReceiveAuthDailyTransactionStats	9
	<i>Webservice</i> : PDSReceiveAuthDailyCommodityStats	9
2.1.4	NIC – DISPLAY REPORTS ON ANNAVITRAN.NIC.IN: The received data will be replicated in the NIC Repository. The same will be portrayed on public portal.....	9
2.1.5	NIC returns error summary report on all webservices	9
3.	Annavitrans.nic.in 2.1 Cloud Infrastructure Architecture	10

4.	Data Dictionary of All Web-services.....	11
4.1	Transactional Tables.....	11
4.1.1	Common header for all web services.....	11
4.1.2	Web service with Header for Error Summary of all web services: PDSReceiveErrorReportHeader	12
4.1.3	PDSReceiveStatewiseMonthlyStats	12
4.1.4	PDSReceiveDistrictwiseMonthlyStats	13
4.1.5	PDSReceiveDistrictwiseDailyCommodityStats	15
4.1.6	PDSReceiveAuthDailyTransactionStats	15
4.1.7	PDSReceiveAuthDailyCommodityStats	16
4.1.8	PDSReceiveErrorReport.....	17
5.	WEB SERVICES	18
	ANNEXURE A: Masters.....	21

Table of Figures

<i>Figure 1: Annavitran 2.1</i>	8
<i>Figure 2: FPS Automation – Architecture Diagram</i>	10

Introduction

PDS is an important constituent of the strategy for policy, to ensure availability of food grains to the public at affordable prices, for enhancing the food security for the poor, to aid in poverty eradication and is intended to serve as a safety net for the poor whose number is more than 330 million and are nutritionally at risk. PDS evolved as a major instrument of the Government's economic PDS with a network of over 5 lakhs Fair Price Shops (FPS) and is the largest distribution network of its type in the world. PDS is operated under the joint responsibility of the Central and the State Governments. The Central and State Governments have the responsibility for procurement, storage, transportation and bulk allocation of food grains to their respective Godowns. The responsibility for distributing the same to the consumers through the network of Fair Price Shops (FPSs) rests with the State Governments. The operational responsibilities including allocation within the State, issue of ration cards, supervision and monitoring the functioning of FPSs rest with the State Governments.

1. Objective of the document

Fair Price Shops provide the only touch point for the end beneficiary in the total Public Distribution System (PDS). Thus, having transparency in the functioning of FPS is critical. FPS automation provides a medium to record and transmit the transactions made at the FPS for having greater transparency in the overall PDS value chain. FPS Automation intends to authenticate the beneficiary to ensure that the commodity issuance is happening to the intended beneficiary through biometric authentication with UIDAI server and **populate the Sale transaction data of all the States and UTs (Union Territories) at annavitran.nic.in, Centre can reimburse the food subsidy based on the Electronic Device(Point of sale) according to NFSA policies.** It also facilitates the beneficiary with cashless payment options.

2. Process Flow

States/UTs are following different architectures of FPS automation and these States/UTs FPS Automation servers (including state dhaanyapurti portals managed by NIC) coordinate with NIC Central server(annavitrان.nic.in) for showing all PDS transactional statistics under one National portal annavitrان.nic.in 2.1.

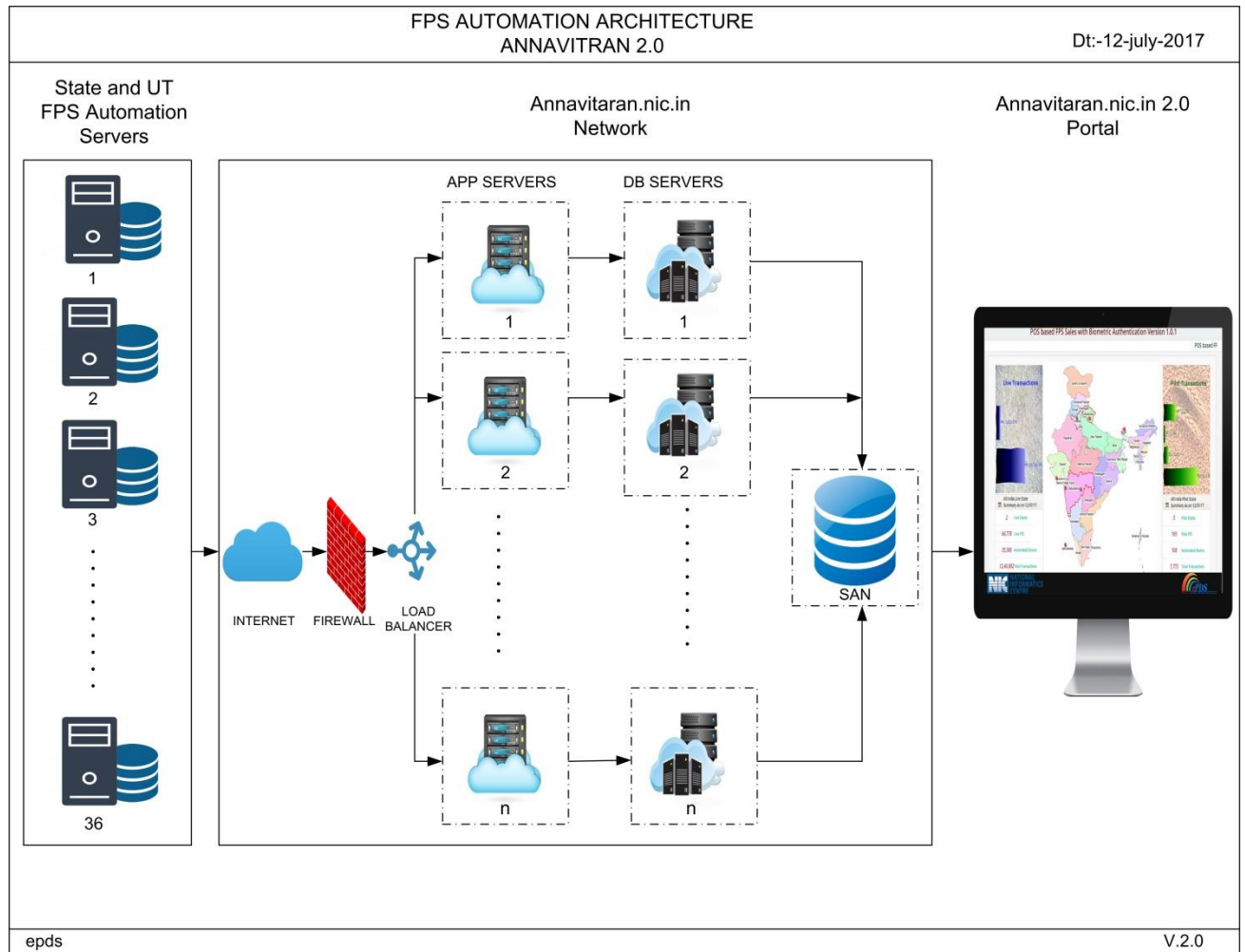


Figure 1: Annavitrان 2.1

2.1 Data Preparation and Data Staging

2.1.1 STATES - PREPARE STATE MONTHLY DATA: The States/UTs prepare the monthly cumulative counts (ration cards, beneficiaries, FPS counts used) in a pre-defined format state wise and district wise as per 3.1.2.

2.1.2 STATES - PULL STATE MONTHLY DATA: NIC annavitran server receives data from states by hitting the state URL of the web-service on monthly basis.

Webservice : PDSReceiveStatewiseMonthlyStats

Webservice : PDSReceiveDistrictwiseMonthlyStats

2.1.3 STATES - PULL STATE DAILY DATA: NIC annavitran server receives transactional data from states by hitting the state URL of the web-service on daily/hourly/scheduled basis.

Webservice : PDSReceiveDistrictwiseDailyCommodityStats

Webservice : PDSReceiveAuthDailyTransactionStats

Webservice : PDSReceiveAuthDailyCommodityStats

2.1.4 NIC – DISPLAY REPORTS ON ANNAVITRAN.NIC.IN: The received data will be replicated in the NIC Repository. The same will be portrayed on public portal.

2.1.5 NIC returns error summary report on all webservices

Webservice : PDSReceiveErrorReport

3. Annavitrان.nic.in 2.1 Cloud Infrastructure Architecture

Data will be received through web services from States and will be landed in NIC repository after validation checks. Thereafter transactional data will be populated in Annavitrان.nic.in 2.1 all India Portal.

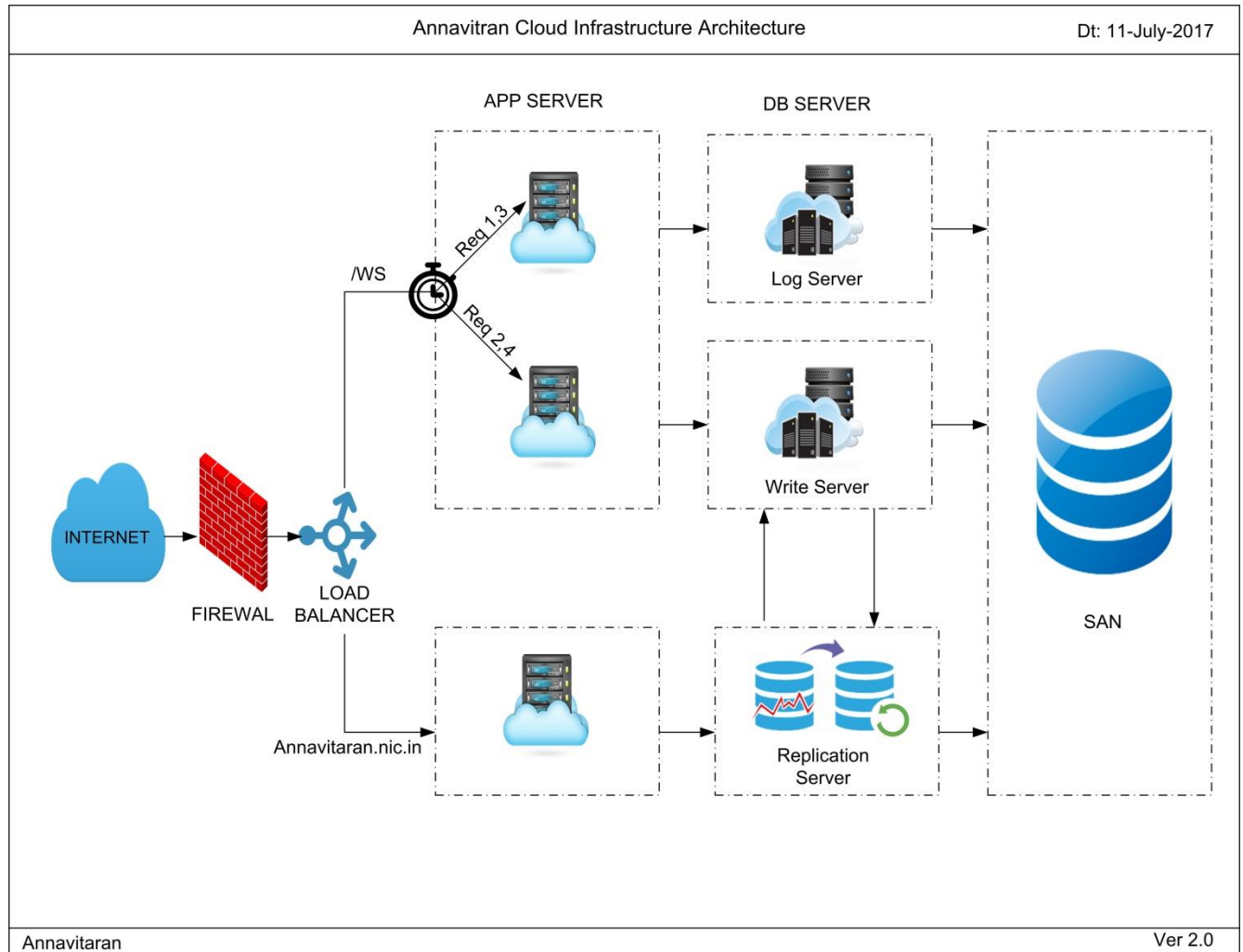


Figure 2: FPS Automation – Architecture Diagram

4. Data Dictionary of All Web-services

4.1 Transactional Tables

4.1.1 Common header for all web services

Field Name	JSON Object	Type	Purpose	Required	Unique
State Code	st_cd	integer	State code. Refer State codes from Annexure A(Masters M1).	Y	
Request Code	req	character varying(20)	Unique Request code . Format :Timestamp(14)+REQCODE(4)+Batch Id(2) <i>DdmmYYYYhhmmss+REQCODE of 4 digits+Batch id in 2 digits(XX).</i> REQCODE = MONS – PDSReceiveStatewiseMonthlyStats MOND – PDSReceiveDistrictwiseMonthlyStats DAIC - PDSReceiveDistrictwiseDailyCommodityStats DAIT - PDSReceiveAuthDailyTransactionStats DAIS – PDSReceiveAuthDailyCommodityStats ACKS - PDSReceiveErrorReport	Y	Y
Month	month	integer	Month of Allocation	Y	
Year	year	integer	Year of allocation	Y	
Encrypted User name	u_name	character varying	User name	Y	
Encrypted password	u_pwd	character varying	Password	Y	
Total count	totcnt	integer	Total count of records in this batch to be sent	Y	
Batch Id	bid	integer	Batch id of records starting from 0. Each batch of size record count	Y	
Record Count	recnt	integer	Record count = 2000 per batch(maximum)	Y	
Data Received Timestamp	data_date	character varying	Date on which this packet is received. dd-mm-yyyy. Date as sent by pds server.	Y	
DFSO Count	dfso_cnt	integer	Number of DFSOs in context	Y	
Data preparation timestamp when data is prepared by state	data_ts	DdmmYYYYhhmmss character varying(14)	Timestamp on which the data that is being sent to PDS is prepared by state.	Y	

4.1.2 Web service with Header for Error Summary of all web services:
PDSReceiveErrorReportHeader

Field Name	JSON Object	Type	Purpose	Required	Unique
State Code	st_cd	integer	State code. Refer State codes from Annexure A (Masters M1).	Y	
Request Code	req	character varying(20)	Unique Request code . Format :Timestamp(14)+REQCODE(4)+Batch Id(2) <i>DdmmYYYYhhmmss+REQCODE of 4 digits+Batch id in 2 digits(XX).</i> REQCODE = ACKS- PDSReceiveErrorReport	Y	Y
Month	month	integer	Month of Allocation	Y	
Year	year	integer	Year of allocation	Y	
Encrypted User name	u_name	character varying	User name	Y	
Encrypted password	u_pwd	character varying	Password	Y	
Data Received Timestamp	data_date	character varying	Date on which this packet is received. dd-mm-yyyy. Date as sent by pds server.	Y	
Web service code	ws_code	Character varying(10)	MONS – PDSReceiveStatewiseMonthlyStats MOND – PDSReceiveDistrictwiseMonthlyStats DAIC - PDSReceiveDistrictwiseDailyCommodityStats DAIT - PDSReceiveAuthDailyTransactionStats DAIS - PDSReceiveAuthDailyCommodityStats	Y	
Error that might prevent web service from consumption	err	Character varying(50 0)	Returns 0 in case web service is consumed else an error statement is there (per web service)	Y	

4.1.3 PDSReceiveStatewiseMonthlyStats

Field Name	JSON Object	Type	Purpose	Required	Unique
District Count	dist_count	Integer	Number of Districts	Y	
FPS Count	fps_count	double	FPS counts in state	Y	
Total Device	device	double	Total Device count in state	Y	

Count	_count				
Ration Card Total Count	rc_tot	double	Ration Card Total count in state	Y	
Ration Card NFSA_PHH Count	rc_nfsa_phh	double	Ration Card NFSA_PHH count in state	Y	
Ration Card NFSA_AAY Count	rc_nfsa_aay	double	Ration Card NFSA_AAY count in state	Y	
Ration Card NON_NFSA Count	rc_non_nfsa	double	Ration Card NON_NFSA count in state	Y	
Beneficiary Total Count	mem_tot	double	Beneficiary Total count in state	Y	
Beneficiary NFSA_PHH Count	mem_nfsa_phh	double	Beneficiary NFSA_PHH count in state	Y	
Beneficiary NFSA_AAY Count	mem_nfsa_aay	double	Beneficiary NFSA_AAY count in state	Y	
Beneficiary NON_NFSA Count	mem_non_nfsa	double	Beneficiary NON_NFSA count in state	Y	
wheat Total allocated	wheat_tot	double	Wheat - Total allocated in state in Kg	Y	
rice Total allocated	rice_tot	double	Rice - Total allocated in state in Kg	Y	
Total coarse grains allocated	cg_tot	double	Coarse Grains allocated in state in Kg	Y	
Total no of cashless fps	fps_with_cashless_facility_count	double	Total no of cashless fps out of total fps (fps_count)	Y	

4.1.4 PDSReceiveDistrictwiseMonthlyStats

Field Name	JSON Object	Type	Purpose	Required	Unique
DFSO code	dfso_cd	Character varying	Code of District Food Supplies Officer	Y	
DFSO Name	dfso_nm	character varying(99)	Name of District Food Supplies Officer	Y	

District Count	dist_count	Integer	Number of Districts for that DFSO	Y	
FPS Count	fps_count	double	FPS counts under DFSO	Y	
Device Count	device_count	double	Device counts under DFSO	Y	
Ration Card Total Count	rc_tot	double	Ration Card Total counts under DFSO	Y	
Ration Card NFSA_PHH Count	rc_nfsa_phh	double	Ration Card NFSA_PHH counts under DFSO	Y	
Ration Card NFSA_AAY Count	rc_nfsa_aay	double	Ration Card NFSA_AAY counts under DFSO	Y	
Ration Card NON_NFSA Count	rc_non_nfsa	double	Ration Card NON_NFSA counts under DFSO	Y	
Beneficiary Total Count	mem_tot	double	Beneficiary Total Count under DFSO	Y	
Beneficiary NFSA_PHH Count	mem_nfsa_phh	double	Beneficiary NFSA_PHH Count under DFSO	Y	
Beneficiary NFSA_AAY Count	mem_nfsa_aay	double	Beneficiary NFSA_AAY Count under DFSO	Y	
Beneficiary NON_NFSA Count	mem_non_nfsa	double	Beneficiary NON_NFSA Count under DFSO	Y	
wheat Total allocated	wheat_tot	double	Wheat-Total allocated to DFSO in Kg	Y	
rice Total allocated	rice_tot	double	Rice-Total allocated to DFSO in Kg	Y	
Coarse grains Total allocated	cg_tot	double	Coarse grains - Total allocated to DFSO in Kg	Y	

4.1.5 PDSReceiveDistrictwiseDailyCommodityStats

Field Name	JSON Object	Type	Purpose	Required	Unique
DFSO Code	dfso_cd	character varying(3)	Code of District Food Supplies Officer	Y	Y
DFSO Name	dfso_nm	character varying(99)	Name of District Food Supplies Officer	Y	Y
Card Type Code	ct_code	smallint	Card Type Code For PHH - 31 For AAY - 2 For NON-NFSA - 99	Y	Y
Commodity Code	comm_cd	smallint	Commodity Code For WHEAT – 1 For RICE -2 For coarse grains - 99	Y	Y
Measurement Unit	munit	smallint	Measurement Unit Kg – 1	Y	Y
Allocated Quantity	all_qty	double	Allocated Quantity under that DFSO in Kg	Y	Y
Distributed Quantity	sold_qty	double	Distributed Quantity under that DFSO in Kg	Y	Y

4.1.6 PDSReceiveAuthDailyTransactionStats

Field Name	JSON Object	Type	Purpose	Required	Unique
DFSO Code	dfso_cd	character varying(3)	Code of District Food Supplies Officer	Y	Y
DFSO Name	dfso_nm	character varying(99)	Name of District Food Supplies Officer	Y	Y
Card Type Code	ct_code	integer	Card Type Code For PHH - 31 For AAY - 2 For NON-NFSA - 99	Y	Y
Authentication Mode	auth_type	Character varying(2)	Authentication Mode for a state (per transaction). Refer Authentication Mode codes from Annexure A(Masters M2)	Y	Y
Total Transaction	total	double	Total Transaction count till that date for the mentioned Authentication Mode for that month	Y	Y

Count					
Total authenticated Transaction Count	total_auth	double	Total Authenticated Transaction Count till that date	Y	Y
Total non-authenticated Transaction Count	total_non_auth	double	Total non-authenticated Transaction Count till that date	Y	Y
Total Transaction Count for today	total_today	double	Total Transaction Count on that date for the mentioned authentication mode	Y	Y
Total non-authenticated Transaction Count for today	total_non_auth_today	double	Total non-authenticated Transaction Count on that date	Y	Y
Total distinct Ration cards which performed transactions this month	total_rc_with_txn	double	Total distinct Ration cards which performed transactions this month	Y	
Total distinct FPS which performed transactions this month	operational_pos_count	double	Total distinct FPS which performed transactions this month	Y	
Total SMS sent to beneficiaries this month	sms_sent	double	Total SMS sent to beneficiaries this month	Y	

4.1.7 PDSReceiveAuthDailyCommodityStats

Field Name	JSON Object	Type	Purpose	Required	Unique
DFSO Code	dfso_cd	character varying(3)	Code of District Food Supplies Officer	Y	Y
DFSO Name	dfso_nm	character varying(99)	Name of District Food Supplies Officer	Y	
Card Type Code	ct_code	integer	Card Type Code For PHH - 31	Y	

			For AAY - 2 For NON-NFSA – 99 – No need to send for Non NFSA		
Commodity Code	comm_cd	integer	Commodity Code For WHEAT – 1 For RICE -2 For coarse grains – 99 No need to send for other commodities	Y	
Measurement Unit	munit	integer	Measurement Unit Kg – 1	Y	-
Authentication mode	auth_type	Character varying(2)	Authentication Mode for a state (per transaction). Refer Authentication Mode codes from Annexure A(Masters M2)	Y	
Total Distributed Quantity	total_qty	double	Total Distributed Quantity till that date for that month in Kg for the mentioned Authentication mode	Y	
Total Authenticated Sold Quantity	total_auth_qty	double	Total Quantity sold after authentication till that date for the month in Kg	Y	
Total Un Authenticated Sold Quantity	total_no_auth_qty	double	Total quantity sold without Authentication till that date for the month in Kg	Y	
Total Distributed Quantity for today	total_qty_today	double	Total Distributed Quantity on that date for the month on that day in Kg for the mentioned Authentication mode	Y	
Total Authenticated Sold Quantity for today	total_auth_qty_today	double	Total Quantity sold after authentication on that date in Kg	Y	
Total Un Authenticated Sold Quantity for today	total_no_auth_qty_today	double	Total quantity sold without Authentication on that date in Kg	Y	

4.1.8 PDSReceiveErrorReport

Field Name	JSON Object	Type	Purpose	Required	Unique
Acknowledgement/ Resend flag	ack	Smallint	0-received 1-resend	Y	Y

5. WEB SERVICES

WebService Name	REQ Code	WebService Description	Sample Request Json	Sample Response Json
PDSReceiveStatewiseMonthlyStats	MONS	This web-service is received by NIC annavitrans at start of the month by every state. Every state intimate annavitrans 2.1 with that month year PDS relative state wise cumulative counts.	{ pDSReceiveStateHeader Json Parameters separated by comma. Sample : "dfso_cd": "", "	{ "pDSReceiveStateHeader": { Json Parameters separated by comma. Sample : "dfso_cd": "", }, "pDSReceiveStatewiseMonthlyStats": [{ Json Parameters separated by comma. Sample : "dfso_cd": "", }] }
PDSReceiveDistrictwiseMonthlyStats	MOND	This web-service is received by NIC annavitrans at start of the month by every state per DFSO. Every state intimate annavitrans 2.1 with that month year PDS related cumulative counts per DFSO.	{ pDSReceiveStateHeader Json Parameters separated by comma. Sample : "dfso_cd": "", "	{ "pDSReceiveStateHeader": { Json Parameters separated by comma. Sample : "dfso_cd": "", }, "pDSReceiveDistrictwiseMonthlyStats": [{ Json Parameters separated by comma. Sample : "dfso_cd": "", }] }
PDSReceiveDistrictwiseDailyCommodityStats	DAIC	This web-service is received by NIC annavitrans everyday once by every state. Every state intimate annavitrans 2.1 with that day commodity stock and	{ pDSReceiveStateHeader Json Parameters separated by	{ "pDSReceiveStateHeader": { Json Parameters separated by comma. Sample : "dfso_cd": "", },

		sale counts per DFSO (District Food Supplies Officer).	comma. Sample : "dfso_cd": "" }	" pDSReceiveDistrictwiseDailyCommodityStats": [{ Json Parameters separated by comma. Sample : "dfso_cd": "", }] }
PDSReceiveAuthDailyTransactionStats	DAIT	This web-service is received by NIC annavitrans everyday once by every state. Every state intimate annavitrans 2.1 with that day transaction count per commodity per card type with authentication status per DFSO (District Food Supplies Officer).	{ pDSReceiveStateHeader Json Parameters separated by comma. Sample : "dfso_cd": "" }	{ "pDSReceiveStateHeader": { Json Parameters separated by comma. Sample : "dfso_cd": "", }, pDSReceiveAuthDailyTransactionStats": [{ Json Parameters separated by comma. Sample : "dfso_cd": "", }] }
PDSReceiveAuthDailyCommodityStats	DAIS	This web-service is received by NIC annavitrans everyday once by every state. Every state intimate annavitrans 2.1 with that day Distributed quantity per commodity per card type with authentication status per DFSO (District Food Supplies Officer).	{ pDSReceiveStateHeader Json Parameters separated by comma. Sample : "dfso_cd": "" }	{ "pDSReceiveStateHeader": { Json Parameters separated by comma. Sample : "dfso_cd": "", }, pDSReceiveAuthDailyCommodityStats": [{ Json Parameters separated by comma. Sample : "dfso_cd": "", }] }

Request all the states to kindly implement this. Required in Reports.



PDSReceiveErrorReport	ACKS	Annavitran server gives error summary report using this webservice (header)	{ pDSReceiveErrorReportHeader Json Parameters separated by comma. Sample : "dfso_cd": "" }	{ "pDSReceiveErrorReportHeader": { Json Parameters separated by comma. Sample : "dfso_cd": "", }, "pDSReceiveErrorReport": [{ Json Parameters separated by comma. Sample : "dfso_cd": "", }] }
------------------------------	------	---	---	--

Prefixed 0 for state codes with one digit

ANNEXURE A: Masters

M1 : STATE CODES

Sno	State Code	State Name in Local Language	State Name in English
M1.1	01	जम्मू कश्मीर	JAMMU AND KASHMIR
M1.2	02	हिमाचल प्रदेश	HIMACHAL PRADESH
M1.3	03	पंजाब	PUNJAB
M1.4	04	चंडीगढ़	CHANDIGARH
M1.5	05	उत्तरांचल	UTTARANCHAL
M1.6	06	हरयाणा	HARYANA
M1.7	07	दिल्ली	DELHI
M1.8	08	राजस्थान	RAJASTHAN
M1.9	09	उत्तरप्रदेश	UTTAR PRADESH
M1.10	10	बिहार	BIHAR
M1.11	11	सिक्किम	SIKKIM
M1.12	12	अरुणाचल प्रदेश	ARUNACHAL PRADESH
M1.13	13	नागालैंड	NAGALAND
M1.14	14	मणिपुर	MANIPUR
M1.15	15	मिजोरम	MIZORAM
M1.16	16	त्रिपुरा	TRIPURA
M1.17	17	मेघालय	MEGHALAYA
M1.18	18	आसाम	ASSAM
M1.19	19	पश्चिम बंगाल	WEST BENGAL
M1.20	20	झारखण्ड	JHARKHAND
M1.21	21	उड़ीसा	ORISSA
M1.22	22	छत्तीसगढ़	CHHATISGARH
M1.23	23	मध्यप्रदेश	MADHYA PRADESH
M1.24	24	गुजरात	GUJARAT
M1.25	25	दमन और दिउ	DAMAN & DIU
M1.26	26	दादर और नगरहवेली	DADRA & NAGAR HAVELI
M1.27	27	महाराष्ट्र	MAHARASHTRA
M1.28	28	आंध्रप्रदेश	ANDHRA PRADESH
M1.29	29	कर्नाटक	KARNATAKA
M1.30	30	गोवा	GOA

M1.31	31	लक्षद्वीप	LAKSHADWEEP
M1.32	32	केरला	KERALA
M1.33	33	तमिलनाडू	TAMIL NADU
M1.34	34	पांडिचेरी	PONDICHERRY
M1.35	35	अंडमान और निकोबार द्वीपसमूह	ANDAMAN & NICOBAR ISLANDS
M1.36	36	तेलंगाना	TELANGANA

M2: AUTHENTICATION MODE

Sno	auth_type	Purpose
M2.1	ub	(AADHAAR) BIOMETRIC
M2.2	ui	(AADHAAR) IRIS
M2.3	uo	(AADHAAR) OTP
M2.4	sb	STORED BIOMETRIC
M2.5	so	STORED OTP
M2.6	go	GENERATED OTP
M2.7	ut	UNDERTAKING
M2.8	vd	VERIFIED BY DEPARTMENT
M2.9	bc	BARCODE
M2.10	cl	CASHLESS
M2.11	ua	UNAUTHENTICATED